

---

# Preparing Photoshop (PC) for ISOnewspaper26v4 workflow

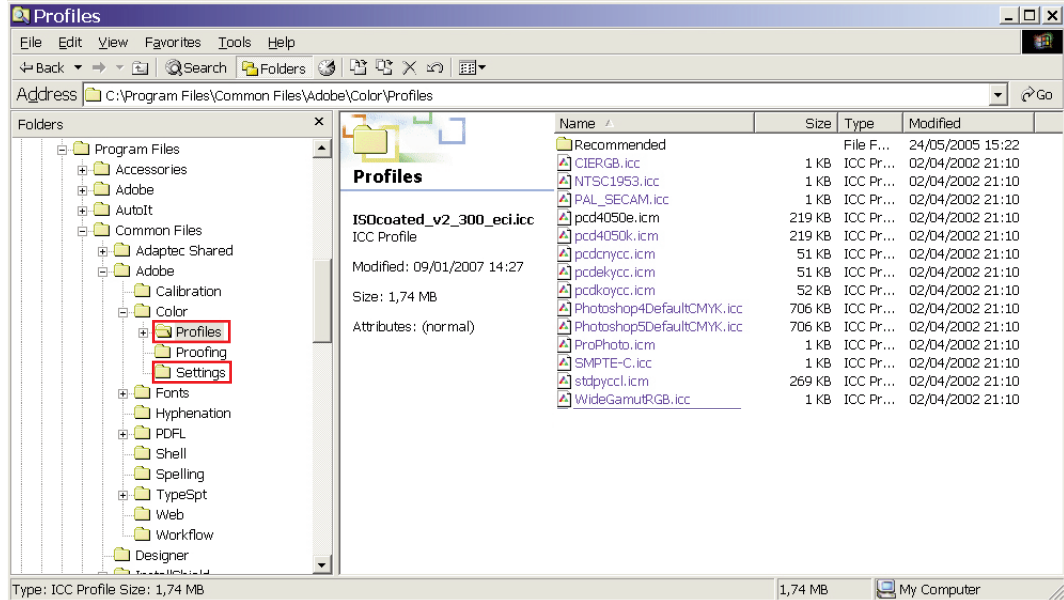
first download the profile (ISOnewspaper26v4.icc)  
and the setting (ISOnewspaper26v4.csf)  
from the Medibelplus website

# Photoshop 7.0 AND CS/CS2/CS3

1. Save the profile and the color setting into the Harddisk.

Profile (.icc) to ".../Program Files/Common Files/Adobe/Profiles"

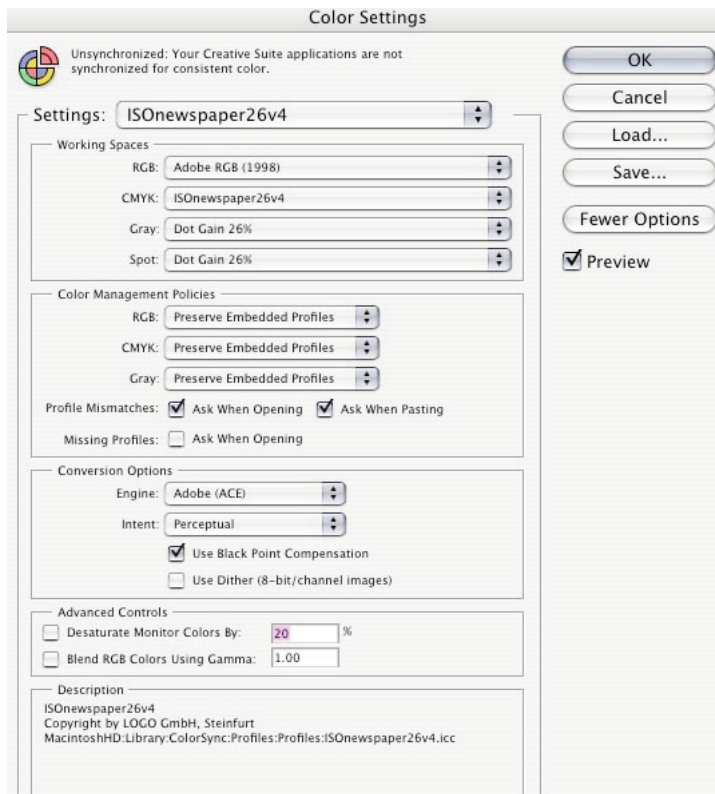
color setting (.csf) to ".../Program Files/Common Files/Adobe/Settings"



2. Load profile / setting into Photoshop.

Open Color Settings (edit / color settings).

Select in Settings ISOnewspaper26v4. The settings are OK now. Click OK.

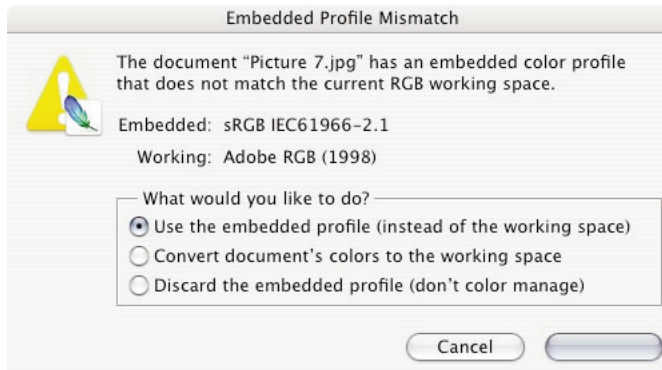


### 3.1. Conversion from RGB to CMYK

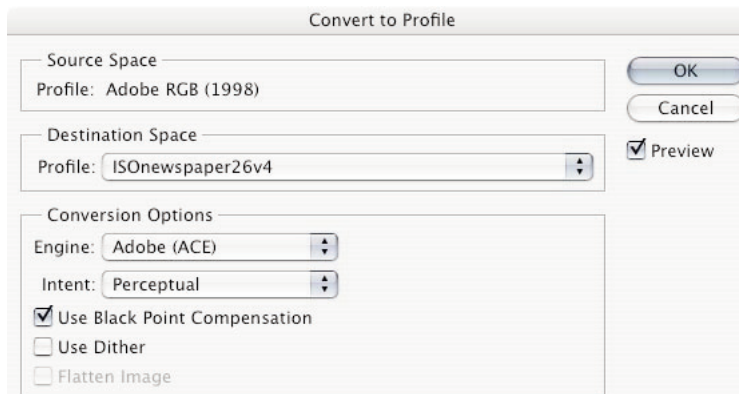
\* Opening an Adobe RGB image:

When the image is originally saved with Adobe RGB embedded, the image opens automatically in Photoshop in the correct color space (if the settings above are used correctly, p 2).

\* Opening an RGB image with another embedded RGB profile (not Adobe RGB, for example: sRGB), the embedded profile should be used to open the image.



When opened correctly, the RGB image has to be optimized. When the image is correct on the screen, it has to be converted to CMYK. This is best done with Convert to Profile (Mode / Convert to Profile)



### 3.2. Conversion of RGB to grayscale.

The RGB image is opened in Photoshop using the embedded profile.

Convert the image to grayscale (Mode / grayscale).

Dotgain of 26% is automatically applied to the image.

Optimize the grayscale image.

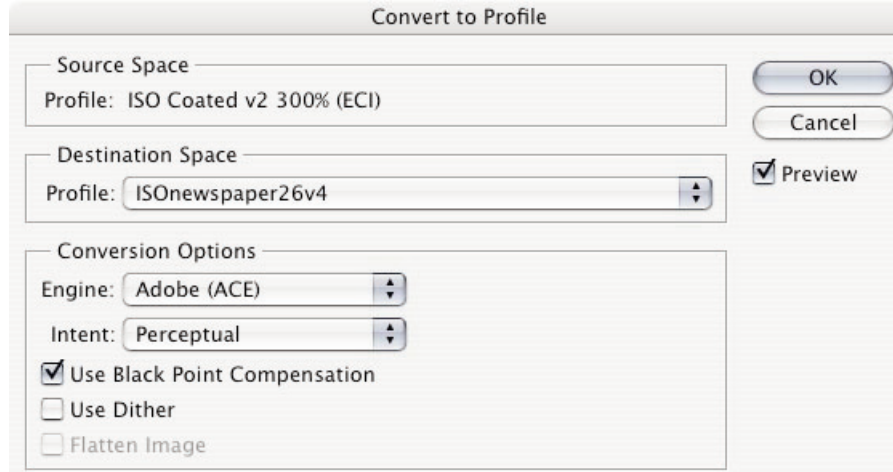
---

### 3.3. Conversion from CMYK to CMYK

#### 3.3.1. CMYK images with embedded profile.

The image is opened using the embed profile.

In the example the image with ISOcoatedv2\_300\_eci.icc embedded is converted to ISOnewspaper26v4.



This is done with Convert to Profile.  
(Edit / Convert to Profile)

#### 3.3.2. CMYK images with no embedded profile.

We suggest the following procedure:

When the image is opened in Photoshop, convert the image to RGB, optimize it and convert it again to CMYK (3.1) using the ISOnewspaper26v4 profile.

If the quality is not OK, ask your client for a new image.